

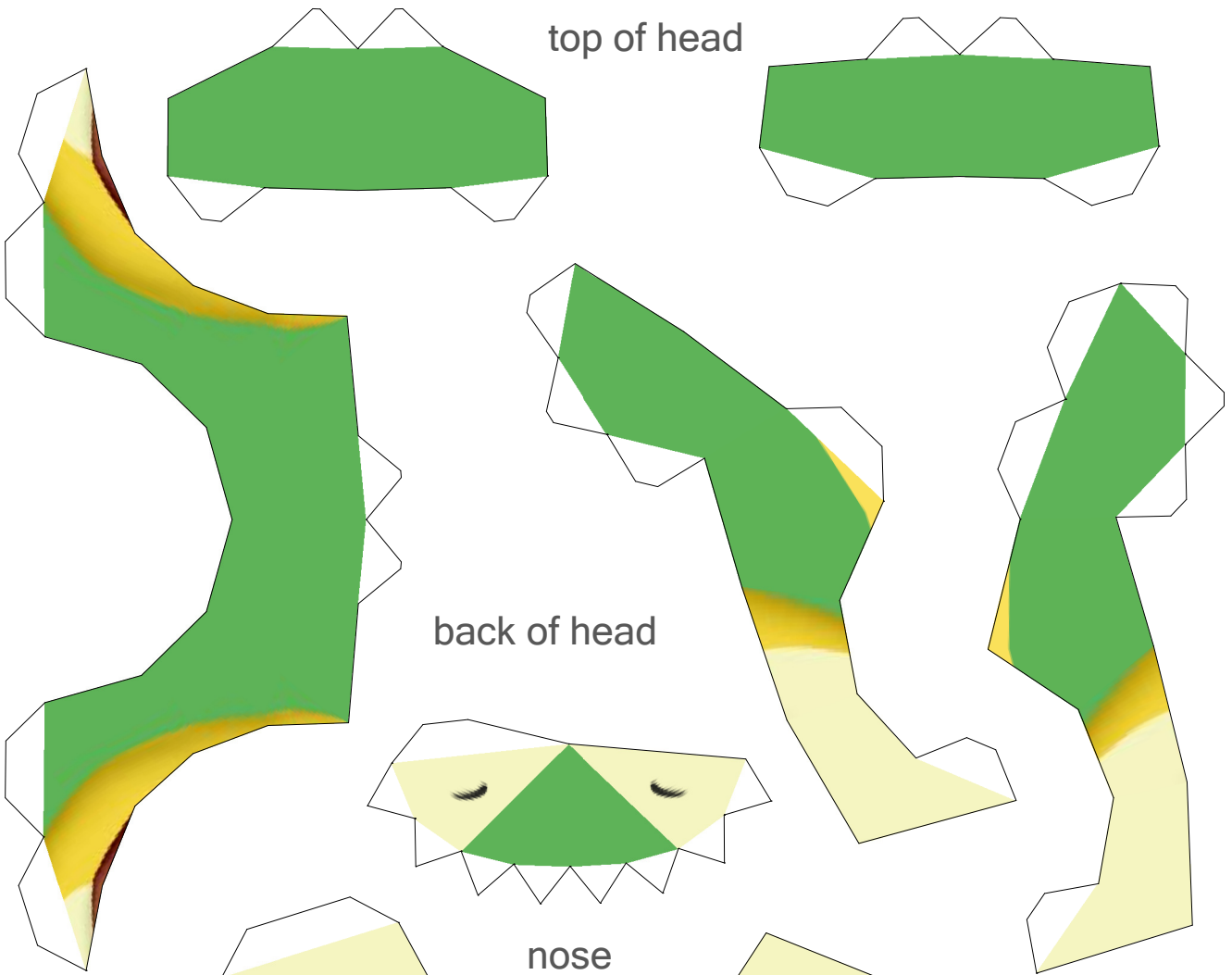


Tsutarja

by PMF & Lyrin

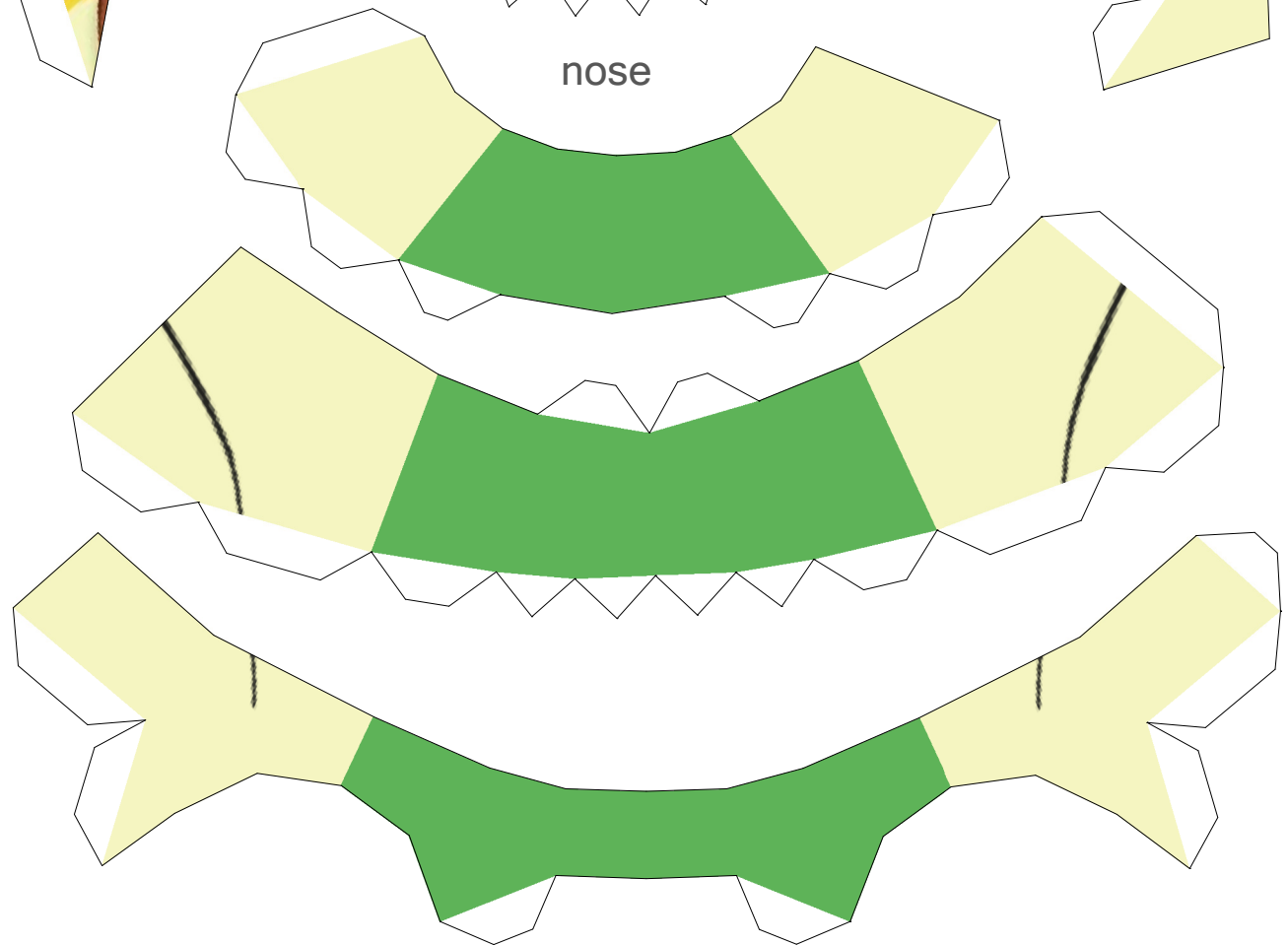
Paper Pokés

top of head



back of head

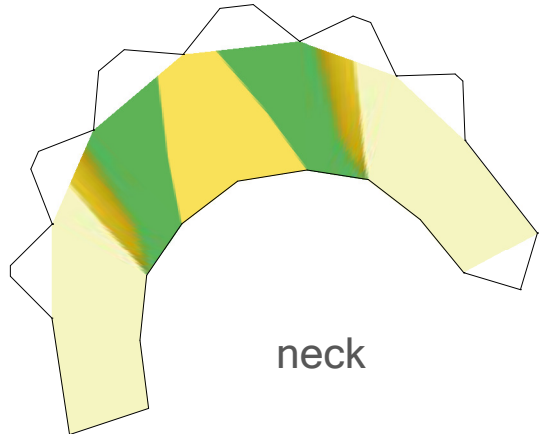
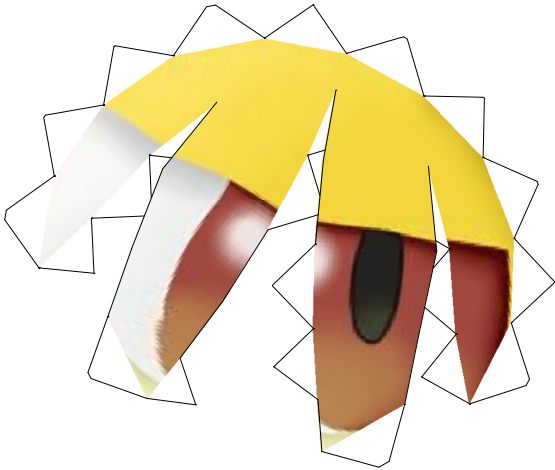
nose



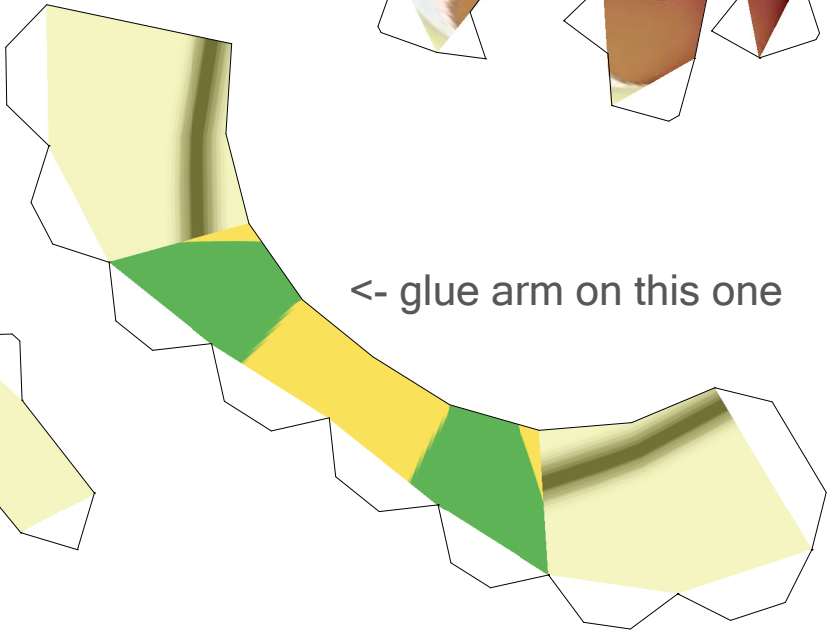
Right eye



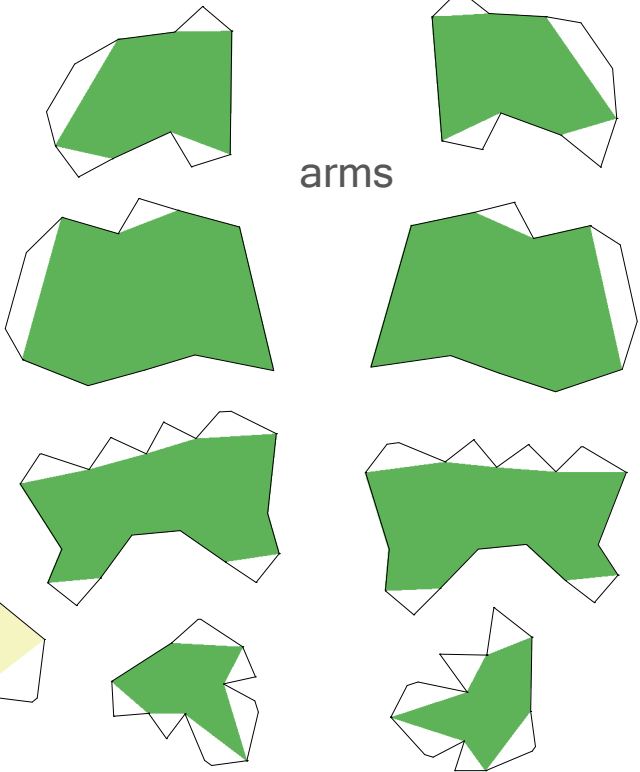
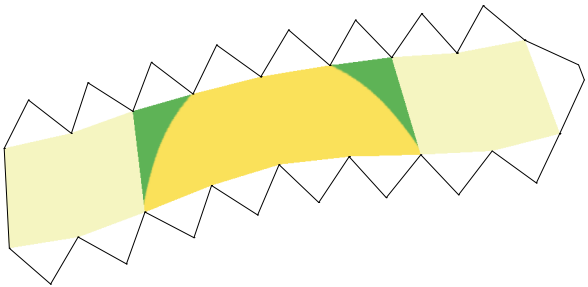
Left eye



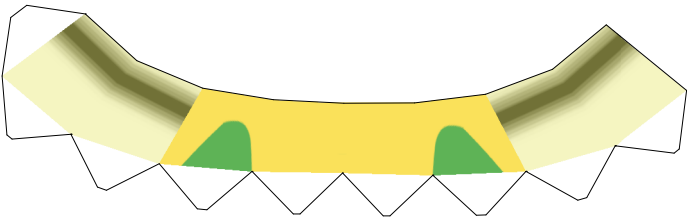
neck



<- glue arm on this one



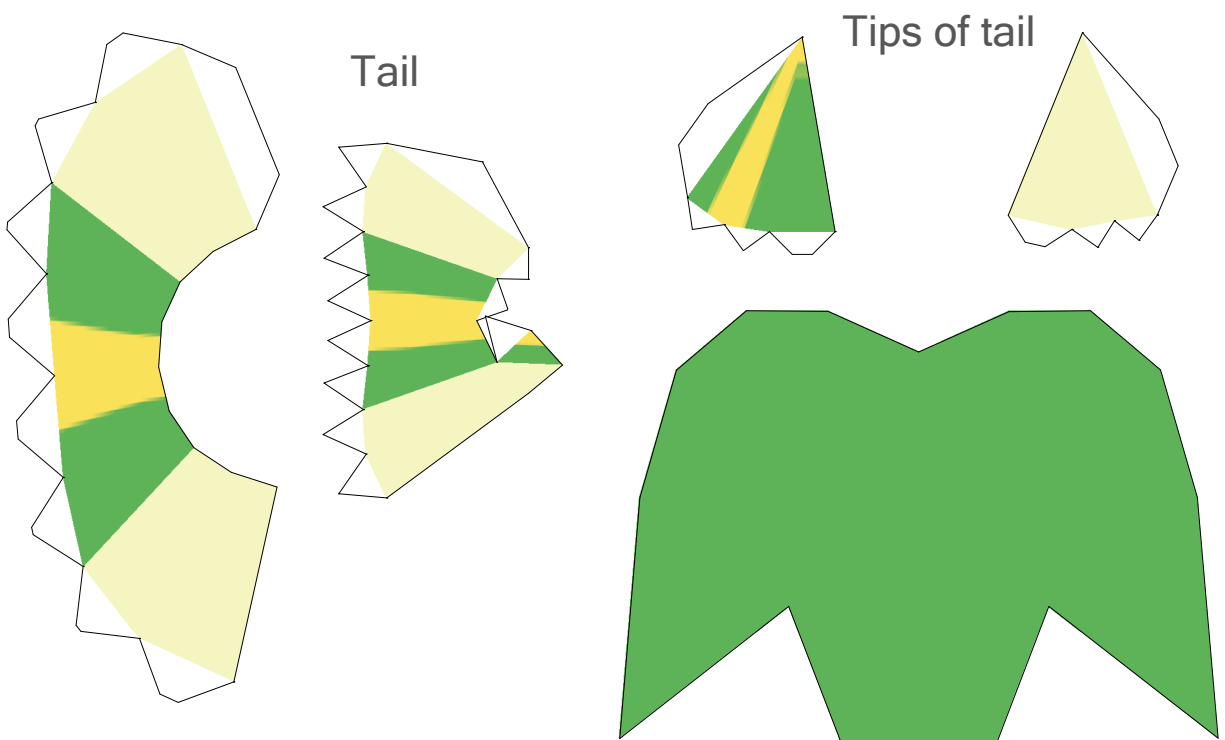
arms



glue collar on this one



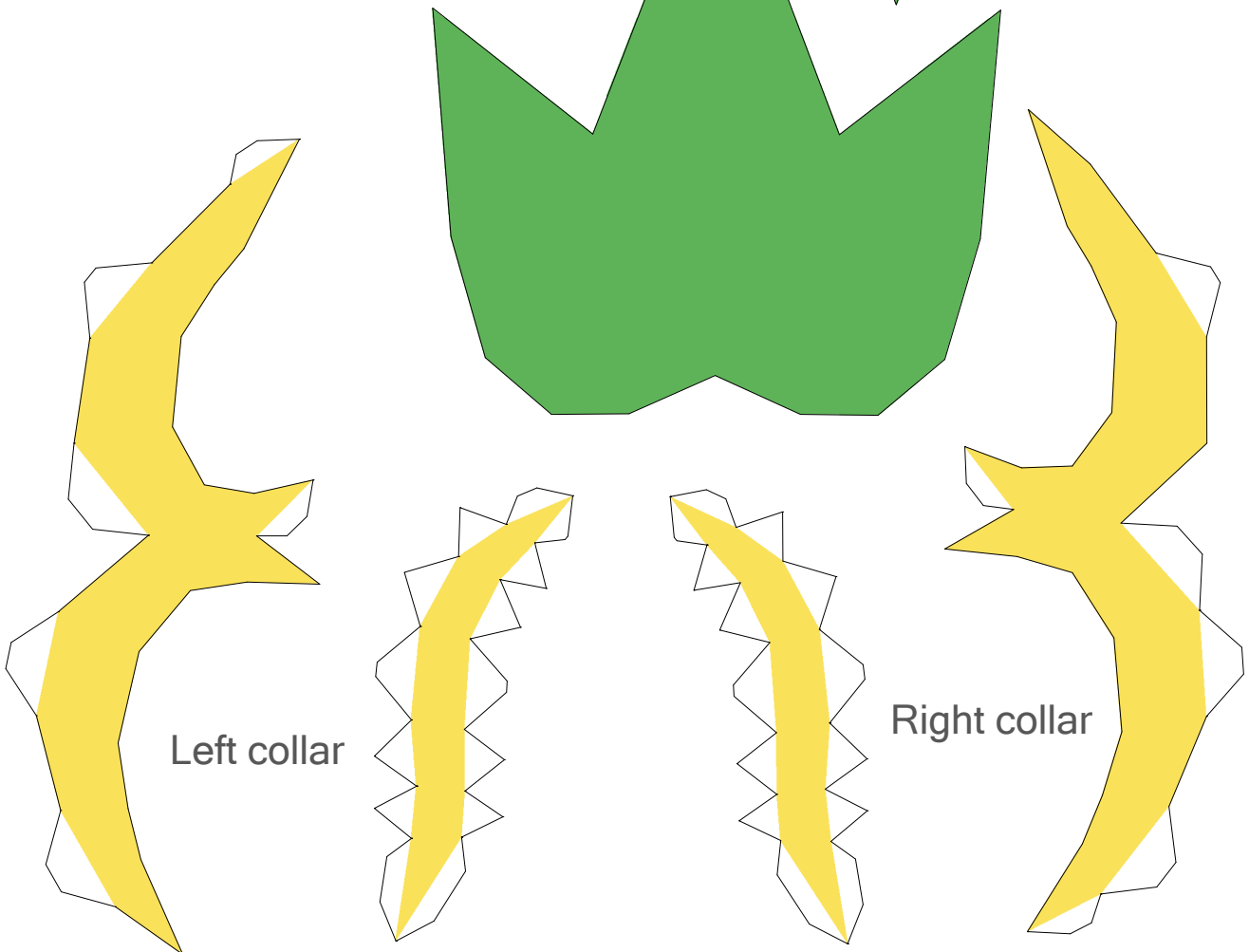
Belly and legs. We recommend gluing the legs before doing tail.



Tail

Tips of tail

Glue the 2 big green pieces together back to back. Then glue the 2 tips of tail on each side on the green part and then on the tail. Kinda like a sandwich.



Left collar

Right collar